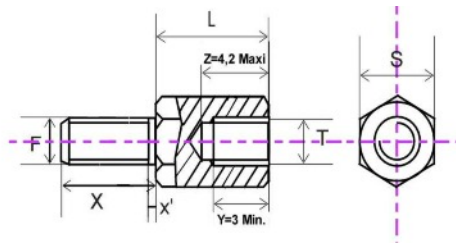


• D Type Screwlocks - Brass and Steel

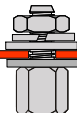


Available Materials:-

Brass: CuZn40Pb3 Plating: Nickel Ni3bk
 Steel: S300Pb Plating: Zinc Zn3-5 B



Stud Length 'X'	External Thread 'F'	Internal Thread 'T'	Body Length 'L'	A/f 'S'	Order Code Brass / Nickel	Order Code Steel / Zinc
6	M3	M3	5	5	IA-MS-303050-05	IA-ST-303050-05
6	M3	4/40 UNC	5	5	IA-MS-304450-05	IA-ST-304450-05
6	4/40 UNC	M3	5	5	IA-MS-443050-05	IA-ST-443050-05
6	4/40 UNC	4/40 UNC	5	5	IA-MS-444450-05	IA-ST-444450-05
8	M3	M3	5	5	IA-MS-303080-05	IA-ST-303080-05
8	M3	4/40 UNC	5	5	IA-MS-304480-05	IA-ST-304480-05
8	4/40 UNC	M3	5	5	IA-MS-443080-05	IA-ST-443080-05
8	4/40 UNC	4/40 UNC	5	5	IA-MS-444480-05	IA-ST-444480-05
12	M3	M3	5	5	IA-MS-303012-05	IA-ST-303012-05
12	M3	4/40 UNC	5	5	IA-MS-304412-05	IA-ST-304412-05
12	4/40 UNC	M3	5	5	IA-MS-443012-05	IA-ST-443012-05
12	4/40 UNC	4/40 UNC	5	5	IA-MS-444412-05	IA-ST-444412-05



Bulk and Individual Package Sets

All the above Screwlocks can be supplied as either:-

Bulk:



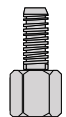
500 Spacers + 1,000 Plain Washers + 500 Shakeproof Washers + 500 Nuts



or



Packaged:



2 Spacers + 4 Plain Washers + 2 Shakeproof Washers + 2 Nuts

