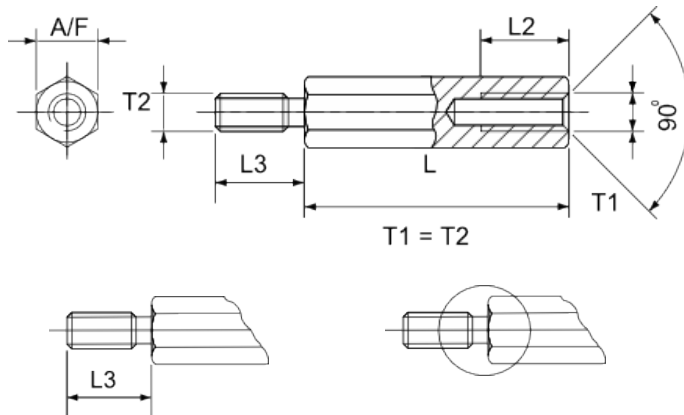


• Hexagonal Spacers Threaded Stud / Tapped Hole - Brass



For Custom Stud Lengths
See ' How to Order '

Undercut - See Note 1

Tapped Depths to Din 76-B Any custom tap depth to order			
L	L2 M2.5 to M5	L2 at M2	L2 at M6
5	3	3	
6	4	4	
8	5	5	
10	6	6	6
12	7	6	7
15	10	6	10
18	10	6	10
20+	10	6	12

• BRASS • BRASS • BRASS • BRASS • BRASS • BRASS • BRASS • BRASS • BRASS • BRASS • BRASS • BRASS • BRASS				
Material: Brass CuZn39Pb to Din 17660		Plating: Nickel G3E to Din 267		RoHS Compliant
Thread	A/f	L3	Series Code	Available Standard Lengths L ± 0.1 - Any custom length to order
M2	4.0	5.0	IA-MS-204050	05 06 07 08 09 10 11 12 13 14 15 16 17 18 19 20 21 22 23 24 25 26 27 28 29 30 35 40 45 50
M2.5	4.0	6	IA-MS-254060	05 06 07 08 09 10 11 12 13 13.5 14 15 16 17 18 19 20 21 22 23 24 25 26 27 28 29 30 33 35 38 40 45 50
M2.5	5.0	6.0	IA-MS-255060	05 06 07 08 09 10 11 12 13 13.5 14 15 16 17 18 19 20 21 22 23 24 25 30 35 40 45 50 55 60
M3	5.0	6.0	IA-MS-305060	05 06 07 08 09 10 11 12 13 13.5 14 15 16 17 18 19 20 21 22 23 24 25 26 27 28 29 30 31 32 33 34 35 36 37 38 39 40 43 45 50 55 60 65 70 75
M3	5.0	8.0	IA-MS-305080	05 06 07 08 09 10 11 12 13 13.5 14 15 16 17 18 19 20 21 22 23 24 25 26 27 28 29 30 31 32 33 34 35 36 37 38 39 40 43 45 50 55 60 65 70 75
M3	5.5	6.0	IA-MS-305560	5 06 07 08 09 10 11 12 13 13.5 14 15 16 17 18 19 20 21 22 23 24 25 26 27 28 29 30 31 32 33 34 35 36 37 38 39 40 41 42 44 45 46 47 48 49 50 55 60 65 70
M3	5.5	8.0	IA-MS-305580	5 06 07 08 09 10 11 12 13 13.5 14 15 16 17 18 19 20 21 22 23 24 25 26 27 28 29 30 31 32 33 34 35 36 37 38 39 40 45 50 55 60 65 70
M4	7.0	8.0	IA-MS-407080	05 06 07 08 09 10 11 12 13 13.5 14 15 16 17 18 19 20 21 22 23 24 25 26 27 28 29 30 31 32 33 34 35 36 37 38 39 40 41 42 43 44 45 50 55 60 65 70 75 80 85 90 95 100
M5	8.0	8.0	IA-MS-508080	08 10 12 15 18 20 25 30 35 40 45 50 55 60 65 70 75 80 85 90 95 100
M6	10.0	10.0	IA-MS-601010	10 12 15 18 20 25 30 35 40 45 50 55 60 65 70 75 80 85 90 95 100

How to order:-

Select the required Series Code & add required standard or custom body length suffix.
i.e IA-MS-305060-20 = body length 'L' of 20mm

For custom stud length 'L3' amend code to required custom length.
i.e. IA-MS-305012-20 = stud length 12mm, body length 20mm

Note 1.

Standard production is with a cut-back which enables flush fitting into a thread with no lead-in.
Non cut-back available.

