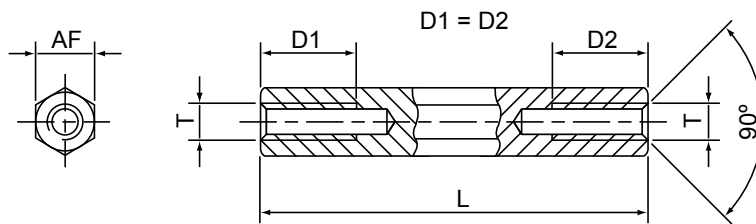


## • Hexagonal Spacers Tapped Both Ends - Brass



Tapped Depths to Din 76-B Custom Depths to Order		
L	D1 M2.5 to M6	D1 at M2
5	5	5
6	6	6
8	8	8
10	10	10
12	12	6
15	15	6
18	9	6
20 +	10	6

• BRASS • BRASS • BRASS • BRASS • BRASS • BRASS • BRASS • BRASS • BRASS • BRASS • BRASS • BRASS • BRASS			
<b>Material:</b> Brass CuZn39Pb to Din 17660		<b>Plating:</b> Nickel G3E to Din 267	<b>RoHS Compliant</b>
Thread	A/f	Series Code	Available Standard Lengths L ± 0.1 - Any custom length to order
M2	4.0	<b>II-MS-2040</b>	05 06 07 08 09 10 11 12 13 14 15 16 17 18 19 20 21 22 23 24 25 26 27 28 29 30 35 40 45 50
M2.5	4	<b>II-MS-2540</b>	05 06 07 08 09 10 11 12 13 13.5 14 15 16 17 18 19 20 21 22 23 24 25 26 27 28 29 30 33 35 38 40 45 50
M2.5	5.0	<b>II-MS-2550</b>	05 06 07 08 09 10 11 12 13 13.5 14 15 16 17 18 19 20 21 22 23 24 25 30 35 40 45 50 55 60
M3	5.0	<b>II-MS-3050</b>	05 06 07 08 09 10 11 12 13 13.5 14 15 16 17 18 19 20 21 22 23 24 25 26 27 28 29 30 31 32 33 34 35 36 37 38 39 40 43 45 50 55 60 65 70 75
M3	5.5	<b>II-MS-3055</b>	05 06 07 08 09 10 11 12 13 13.5 14 15 16 17 18 19 20 21 22 23 24 25 26 27 28 29 30 31 32 33 34 35 36 37 38 39 40 45 50 55 60 65 70
M4	7.0	<b>II-MS-4070</b>	05 06 07 08 09 10 11 12 13 13.5 14 15 16 17 18 19 20 21 22 23 24 25 26 27 28 29 30 33 35 38 40 45 50 55 60 65 70 75 80 85 90 95 100
M5	8.0	<b>II-MS-5080</b>	05 08 10 12 15 18 20 25 30 35 40 45 50 55 60 65 70 75 80 85 90 95 100
M6	10.0	<b>II-MS-6010</b>	05 08 10 12 15 18 20 25 30 35 40 45 50 55 60 65 70 75 80 85 90 95 100
4-40 UNC	5.0	<b>II-MS-UN50</b>	04, 05, 06, 07, 08, 10, 12, 15
<p><b>How to order:-</b></p> <p>Select the required Series Code &amp; add required standard or custom body length suffix :-                      II-MS-3050-20 = body length 'L' of 20mm</p>			

