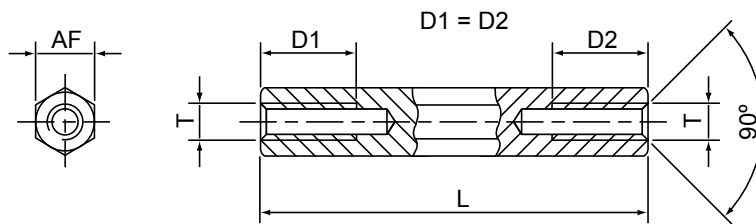


• Hexagonal Spacers Tapped Both Ends - Steel



Tapped Depths to Din 76-B Any custom tap depth to order				
L	D1 at M2.5 to M5	D1 at M2	D1 at M6	D1 at M8
5	5	5	5	
8	8	8	8	
10	10	10	10	
12	12	6	6	
15	15	6	6	15
18	9	6	6	
20	10	6	6	20
30+	10	6	6	14

• STEEL • STEEL • STEEL • STEEL • STEEL • STEEL • STEEL • STEEL • STEEL • STEEL • STEEL • STEEL • STEEL •			
Material: Steel SMnPb30 to Din 176 V1.0718		Plating: Zinc (A3F) to Din 267	RoHS Compliant
Thread	A/f	Series Code	Available Standard Lengths L ± 0.1 - Any custom length to order
M2	4.0	II-ST-2040	05 08 10 12 15 18 20 25 30 35 40
M2.5	4.0	II-ST-2540	05 08 10 12 15 18 20 25 30 35 40
M2.5	5.0	II-ST-2550	05 06 07 08 09 10 11 12 13 13.5 14 15 16 17 18 19 20 25 30 35 40 45
M3	5.0	II-ST-3050	05 06 07 08 09 10 11 12 13 13.5 14 15 16 17 18 19 20 25 30 35 40 45 50 55 60 65 70 75 80
M3	5.5	II-ST-3055	05 06 07 08 09 10 11 12 13 13.5 14 15 16 17 18 19 20 21 22 23 24 25 26 27 28 29 30 31 32 33 34 35 36 37 38 39 40 42 45 50 55 60 65 70 80
M3	6.0	II-ST-3060	05 06 07 08 09 10 11 12 13 13.5 14 15 16 17 18 19 20 21 22 23 24 25 26 27 28 29 30 31 32 33 34 35 36 37 38 39 40 45 50 55 60 65 70 75 80 85 90 95 100
M4	7.0	II-ST-4070	05 06 07 08 09 10 11 12 13 13.5 14 15 16 17 18 19 20 21 22 23 24 25 26 27 28 29 30 31 32 33 34 35 36 37 38 39 40 45 50 55 60 65 70 75 80 85 90 95 100
M4	8.0	II-ST-4080	05 06 07 08 09 10 11 12 13 13.5 14 15 16 17 18 19 20 21 22 23 24 25 26 27 28 29 30 31 32 33 34 35 36 37 38 39 40 45 50 55 60 65 70 75 80 85 90 95 100
M5	8.0	II-ST-5080	05 06 07 08 09 10 11 12 13 13.5 14 15 16 17 18 19 20 21 22 23 24 25 26 27 28 29 30 31 32 33 34 35 36 37 38 39 40 45 50 55 60 65 70 75 80 85 90 95 100
M5	10.0	II-ST-5010	10 12 15 20 22 25 30 35 40 45 50 60
M6	10.0	II-ST-6010	08 10 12 14 15 16 18 20 25 30 35 40 45 50 55 60 65 70 75 80 85 90 95 100
M8	13.0	II-ST-8013	15 18 20 25 30 35 40 45 50 55 60 65 70 75 80 85 90 95 100

How to order:-A16

Select the required Series Code & add required standard or custom body length suffix :-
II-ST-3050-20 = body length 'L' of 20mm

