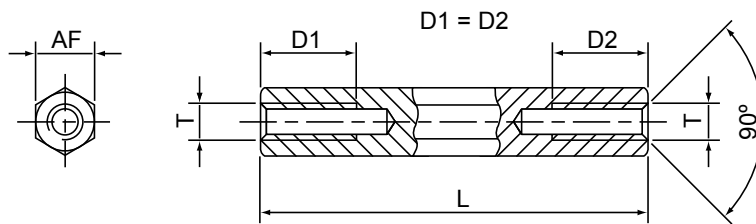


• Hexagonal Spacers Tapped Both Ends - Stainless Steel



| Tapped Depths to Din 76-B Any custom tap depth to order | | | | | |
|--|----------|----------|----------|----------|----------|
| L | D1 at M3 | D1 at M4 | D1 at M5 | D1 at M6 | D1 at M8 |
| 5 | 5 | 5 | | | |
| 8 | 8 | 8 | 8 | | |
| 10 | 10 | 10 | 10 | 10 | |
| 12 | 12 | 12 | 12 | 12 | |
| 15 | 7 | 15 | 15 | 15 | 15 |
| 18 | 7 | 9 | 9 | 9 | 18 |
| 20 | 7 | 9 | 10 | 10 | 20 |
| 25 | 7 | 9 | 10 | 12 | 12 |
| 30+ | 7 | 9 | 10 | 12 | 14 |

• STAINLESS STEEL • STAINLESS STEEL • STAINLESS STEEL • STAINLESS STEEL • STAINLESS STEEL •

Material: Steel X8CrNiS18-9 1.4305

RoHS Compliant

| Thread | A/f | Series Code | Available Standard Lengths L ± 0.1 - Any custom length to order |
|--------|------|-------------------|--|
| M2 | 4.0 | II-VA-2040 | 05 08 10 12 15 18 20 25 30 35 40 |
| M2.5 | 4 | II-VA-2540 | 05 08 10 12 15 18 20 25 30 35 40 |
| M3 | 5.0 | II-VA-3050 | 05 08 10 12 15 18 20 25 30 35 40 45 50 |
| M3 | 5.5 | II-VA-3055 | 05 06 07 08 09 10 11 12 13 14 15 16 17 18 19 20 25 30 35 40 45 50 55 60 65 70 80 |
| M3 | 6 | II-VA-3060 | 05 08 10 12 15 18 20 25 30 35 40 45 50 55 60 65 70 75 80 85 90 95 100 |
| M4 | 7.0 | II-VA-4070 | 05 06 07 08 09 10 11 12 13 14 15 16 17 18 19 20 25 30 35 40 45 50 55 60 65 70 75 80 85 90 95 100 |
| M4 | 8.0 | II-VA-4080 | 05 08 10 12 15 18 20 25 30 35 40 45 50 55 60 65 70 |
| M5 | 8.0 | II-VA-5080 | 05 08 10 12 15 18 20 25 30 35 40 45 50 55 60 65 70 75 80 85 90 95 100 |
| M6 | 10.0 | II-VA-6010 | 10 12 15 18 20 25 30 35 40 45 50 55 60 65 70 75 80 85 90 95 100 |
| M8 | 13.0 | II-VA-8013 | 15 20 25 30 35 40 45 50 55 60 65 70 75 80 85 90 95 100 |

How to order:-

Select the required Series Code & add required standard or custom body length suffix :-
II-VA-3050-20 = body length 'L' of 20mm

